

LANDSCAPE VALUE IN THE HOSPITALITY INDUSTRY

THE FEATHERED NEST INN, NETHERWESTCOTE

The Feathered Nest Inn
Netherwestcote



Austin Design Works Ltd
The Old Warehouse, Old Market, Nailsworth, Gloucestershire GL6 0DU
T: 01453 836393 E: info@austindw.co.uk

LANDSCAPE DESIGN DEVELOPMENT

EXISTING

The Feathered Nest Inn is a comforting pub with cosy interior serving up seasonal, locally produce and lovingly cooked food, alongside artisan beers and wines. It also offers boutique accommodation and is in itself a traditional country lifestyle brand.



The vision is to increase the accommodation on offer, to include self contained suites, each with an outdoor private terrace, your very own little piece of the countryside for a weekend, whether visiting for a wedding or joining in at the local shoot, this will be the place you come home to at the end of a packed day, to drink, dine and drift off - it is the place you want to linger until lunchtime, taking in the view over coffee in bed and then moseying on to tuck into a hangover cure of a Sunday lunch or meet with family for a drink and game on the lawn.

This works at the moment in terms of the plans for the built accommodation, the newly renovated property with roof terrace - ideal for a group or individuals, the new suites in the grounds, also tick all these boxes, but the setting could do more to complete this vision.

BRIEF

New hedgerow planting to the upper car park level, screening the bin store and increasing biodiversity.

The large spoil heap from previous developments as well as spoil from the excavation of the footings is to be spread as much as possible on site, avoiding the tree roots of the large Sycamore to the northern boundary. This material can help form a gentle landscape feature between the Inn and the Guest Suite

Introduction of a fully accessible ramp between the Inn, the Cottages and the new shop, first stage of the ramp can be installed before the Guest Suite is built and would form the edge to a new planted border. Proposed planting to tie-in with the theme nearest the Inn and visually connect the two, as well as enhance the biodiversity of the site and promote the kitchen ingredients on sale and branding for the Inn.

Proposals in this area for enhanced meadow planting, a garden area with fire pit and pergola structure (TBC with AI) between the new shop and the buildings capturing morning views over the bridleway, seating spaces to the front of the buildings in an informal 'farmyard style' that includes troughs of planting dividing each suite.

The garden can become an inviting, friendly, cosy place where there are things to discover - the whole space, broken up into smaller zones or rooms where things feel a little more homely - reflecting the feeling one has inside the Inn, the whole garden can be thought of in terms of more rooms in which to have different functions:-

The main lawn for games and gatherings

The herbaceous garden full of dreamy colours and scents

Evening hangout

Terrace dining

Space for play

Space to get lost in the view

The growing area

Private retreats

The linking elements are also very important and will be considered in the design.

For each of these types there is a recipe - a combination of elements that form the basis for a successful design and something that can be added to over time.

EXISTING SITE



The Inn is set on the edge of the village on a windswept hill, there is a lot of grass, a lot of parking and a lot of gravel with some trees and hedges.

In the winter, this space feels empty and in summer a little uninteresting and a bit commercial. There is much that can be done to improve on this, that will not take too much effort to look after.



The view to the north is beautiful, but the garden feels very open- creating more foreground detail will help frame this view and make the space feel more cosy, enticing people to stay longer.



Existing view towards the new guest accommodation.



View back towards the Inn.

The view from the terrace towards the new accommodation would be framed by soft planting, the large box balls should be okay to move and incorporate into the new scheme and provide winter interest, the lumps smoothed out and a gentle ramped path linking the two areas and lawn.

The large sycamore on the terrace, can be better pruned, but currently is otherwise in good vigour, and provides a setting to the Inn.

The large sculpture can be re-locate the so that it becomes more prominent within the garden.

Walls can be softened with planting and the garden style can emphasise the traditions of the brand.

CONCEPT MASTERPLAN & ZONES

- Welcome and Arrival Areas** - curb appeal, first impressions matter and these spaces set the scene, so also consider signage and lighting in these areas.

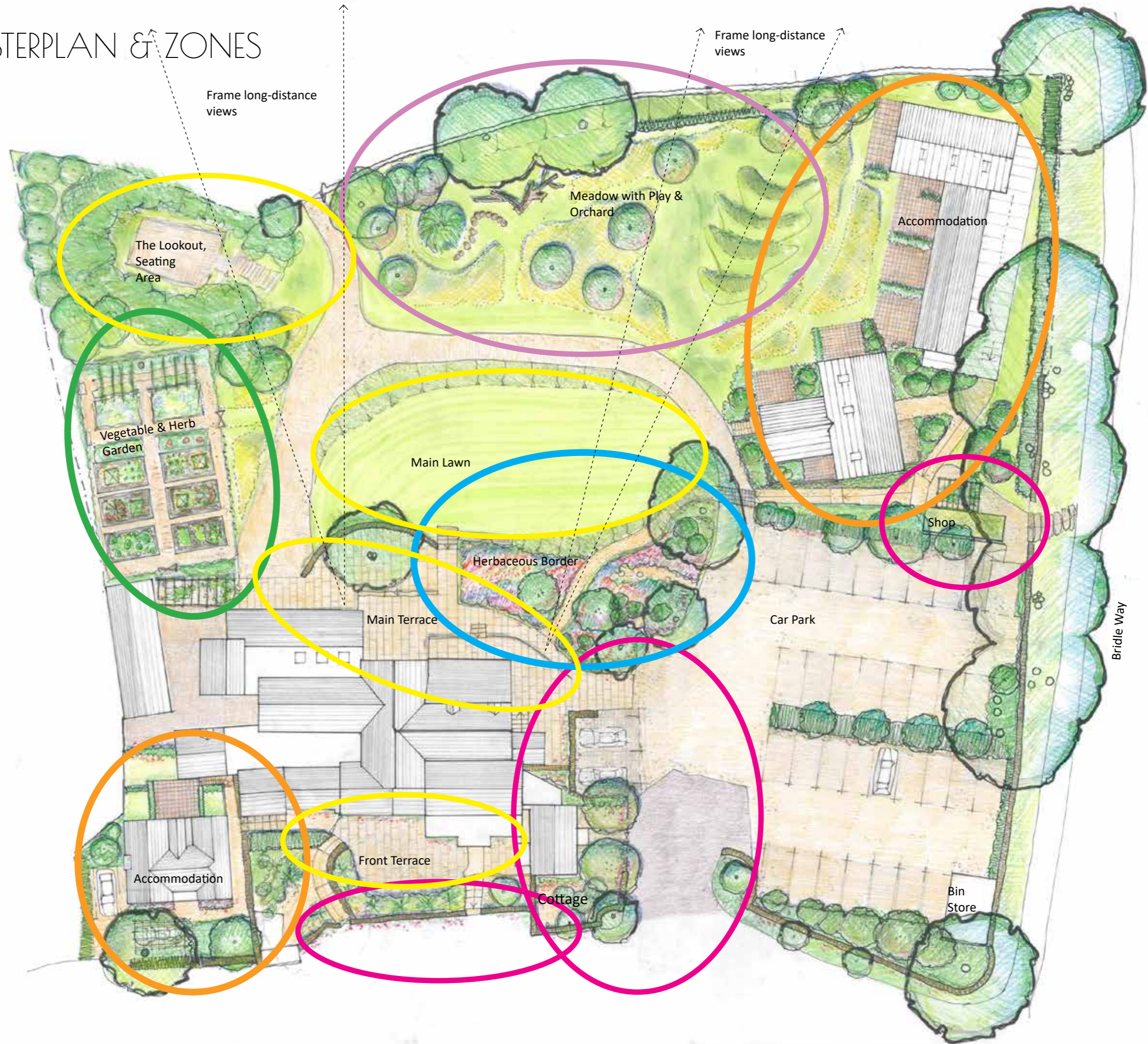
- Customer Seating**, comfortable, accessible (mainly) in easy reach of the bar and restaurant. Leave these as they are.

- The connection** - a herbaceous garden - this area makes the arrival and departure memorable, it creates the backdrop to dinner and wedding pictures, it also has a practical function of joining the old and new parts of the site

- New areas of accommodation** for guests and possible staff. These areas are more robust in nature but must also be welcoming, so colour, and lighting are important as well as framing views and creating focal features in smaller spaces.

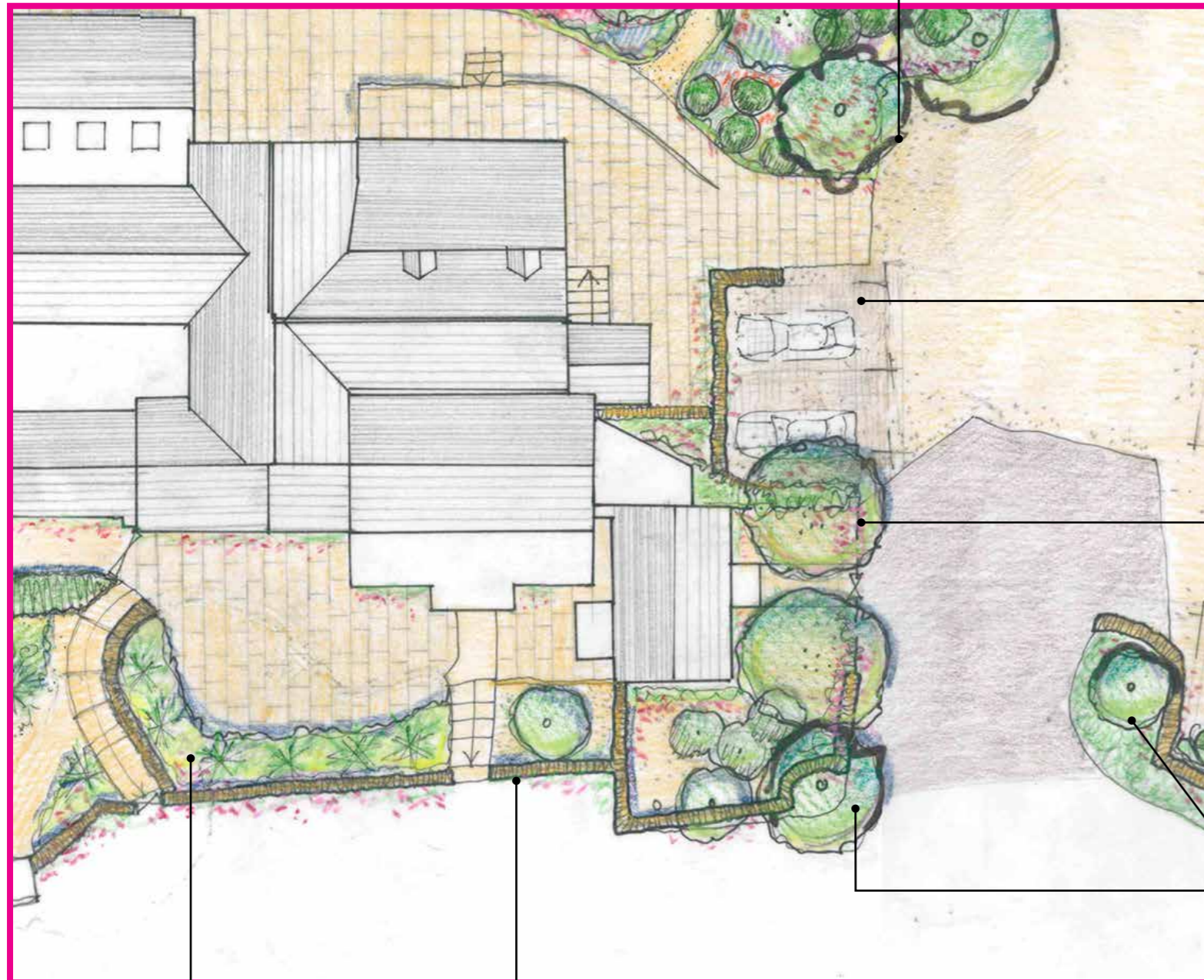
- Play** - people with children form part of the customer profile and having somewhere for the kids to hang out other than a lawn will make this a place they want to linger for longer.

- Food**, this area should become a special destination for guests to see special ingredients and herbs grown for the kitchen to enhance recipes and emphasize the artisan brand message.



WELCOME AREAS

Space for a welcome sign and directional signage with a backdrop of flower borders.



Replace grass with low maintenance shade planting of evergreen shrubs, ferns and grasses to lessen the height of the wall.

Soften the wall with roses or clematis in this old lay-by.

Accessible parking spaces improve the surface in this area to make it more wheelchair friendly

Make the cottage more welcoming with small trees and roses or clematis tumbling over the walls

soften the verge with hardy shrub planting and signage subtly illuminated so that people can easily find the entrance after dark.

Pergola with climbing plants makes the space cosy and small woodland style trees set the scene, under planted with bulbs.

New rustic stone steps with hand rail and new native hedgerow planting.



The shop also serves as an entry point from the bridle way, this will connect guests with local walks, a green roof could soften the building and space for deliveries with extra wide accessible space nearest the shop. Signage is also important to maintain the brand identity.



PRODUCTIVE GARDEN

AN EDIBLE THEME FOR THE GARDENS

Deer rabbit and dog-proof fence which can also be used to grow trailing nasturtium, for salads and sweet peas for the bedrooms.

Tunnels for gourds, fruit or beans

Permanent Rhubarb bed with forcing pots, possibly space for white or red current trained behind.

Renew any rotten raised beds and replace, rotate the vegetables to ensure fertility and avoid disease, making sure that there are leaf, root and fruit (beans) once every three years in 2 of the 6 beds.

Introduce vine clad pergola, this element can provide you with a desert fruit, verjus and the young tendrils can be used as a vegetable. The vines will soften the façades and help hide away the kitchen area from the rest of the garden.



Sage, rosemary, hyssop, thyme, rose geranium, lavender, lovage and chervil - all these can be used in amongst the other borders linking the theme as can wild strawberry, which grows in gravel and self seeds.

Perennial herb beds at ground level. These can provide endless seasoning for fresh sauces, garnishes and cocktails, they can also be dried for use in winter months.

Borage, edible flowers, great cut flower, antiseptic and also makes excellent fertilizer.

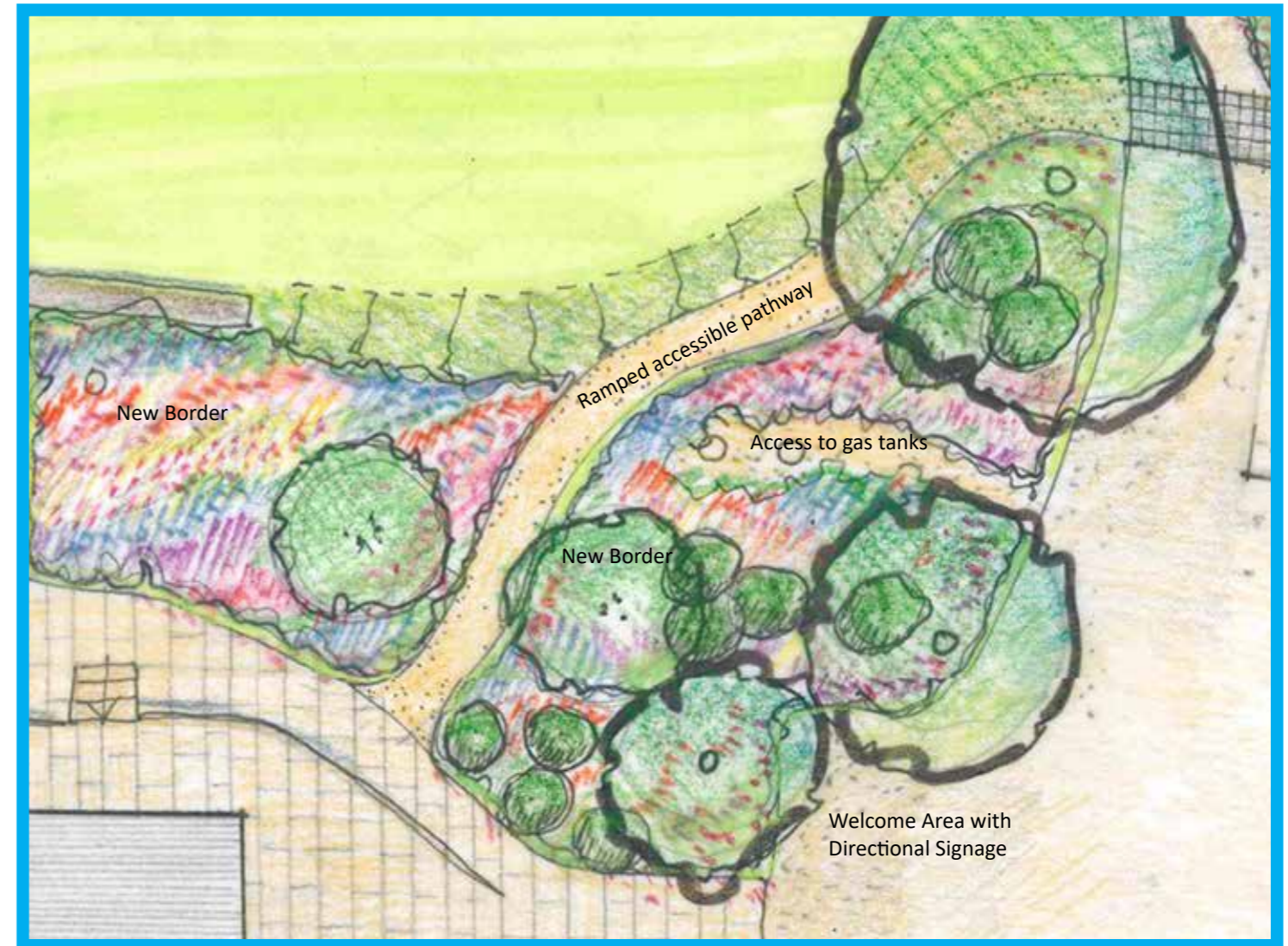
Raised vegetable planters can cascade down the hill and annual self seeders mixed in.

PLAY

HOW A MEADOW CAN BECOME A PLACE FOR PLAY AND RELAXATION



HERBACEOUS BORDER THE NEW LINK



Planted in drifts to include ground cover and shrub roses as well as fennel, cardoons and ornamental grasses with box balls as theme plants as well as ground cover juniper and hebes, inter-planted with pops of colour - this theme can continue to the accommodation areas of the garden. The occasional rose pillar adds drama. Edible annuals such as calendular will add pops of colour.

HERBACEOUS BORDER BEFORE



HERBACEOUS BORDER AFTER



NEW ACCOMMODATION

RECIPES FOR LOWER MAINTENANCE COURTYARD SPACES

1, 2 & 3 Simple narrow screens of evergreen ivy could provide privacy to each small courtyard, and a focal sculptural feature could be lit for evening interest. Keep planting simple shrubs with gravel mulch.



Roof terrace could have a porcelain tile finish with anti-slip surface - this would eliminate the need to replace or maintain it. Narrow aluminium planting troughs could work well here planted up with evergreen ivy for privacy and year-round colour.

If lime tree stays then covered parking space would protect car paintwork

Colourful border each side of the front door.

New access steps between the two properties could be introduced here.

The introduction of climbing plants such as vines should be considered to help create a sense of privacy from the rest of the garden

To give this area its own identity a small unit paver or brick could be used, even a reclaimed cobble. A combination of plated troughs and small borders with ornamental flowering shrubs divide each terrace



In this sunken courtyard plants can be trained up the walls to help soften the space and a focal sculptural or water feature can provide interest - this is a garden to look at - it is the least private

Mainly evergreen planting in this area provides a backdrop of calm and is easy to maintain. Subtle directional lighting is required in this area. This unit is fully accessible, so a couple of accessible parking spaces near the shop would be a good idea.

TOUGH PLANTS FOR PEOPLE PLACES

COMPETITIVE, EASY TO MAINTAIN AND MOSTLY SELF SOW AND SPREAD.
SEASONAL COLOUR YEAR-ROUND.



Perovskia



Anemone



Miscanthus



Primula



Acanthus



Cornus



Verbena



Angelica



Tellima



Santolina